

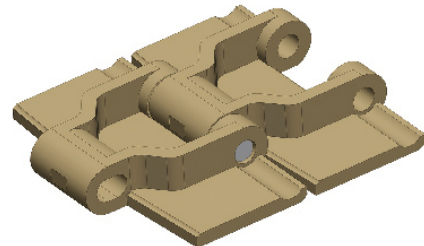
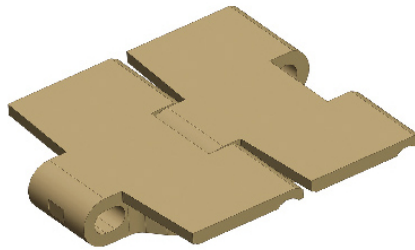
Har828T Curve

TOP CHAINS

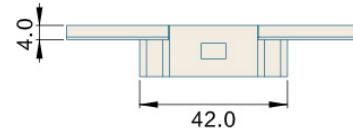
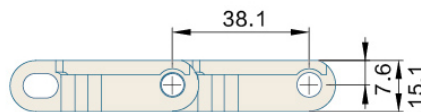
TOP CHAINS 828T

P=38.1mm, T=15.1mm

PIN:Stainless steel



节距 Pitch	链板材质 Material	颜色 Color
38.1mm	POM	咖啡色/Brown



型号 Type No.	宽度 Width (mm)	节距 Pitch (mm)	重量 Weight (Kg/m)	转弯半径 Radius (mm)	负载 Working Capacity (N)
Har828T-K330	83.8	38.1	0.99	510	2000

链轮 Sprocket	护栏 Guide	弯轨 Guide Rails	其余配件 Component
S17-S18	R01-R42	—	C01-C57