

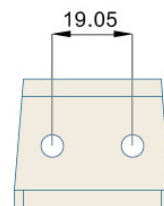
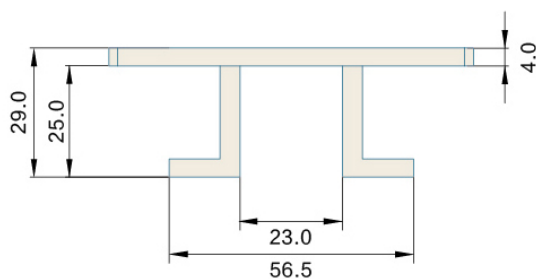
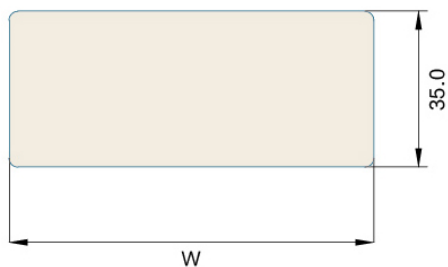
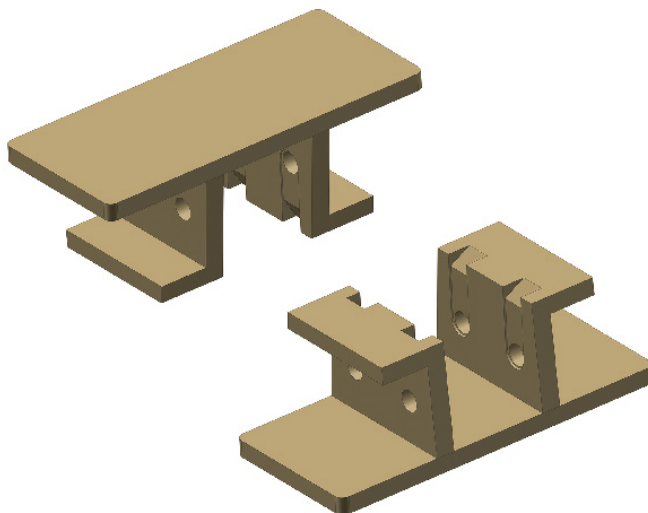
# Har1873TAB Series Curve

## TOP CHAINS

TOP CHAINS 1873TAB Series

P=38.1mm, T=29mm

节距 Pitch	链板材质 Material	颜色 Color
38.1mm	POM	咖啡色/Brown



型号 Type No.	宽度 Width (mm)	节距 Pitch (mm)	重量 Weight (Kg/m)	负载 Working Capacity (N)
Har1873-K325	82.6	38.1	2.10	2560
Har1873-K450	114.3	38.1	2.26	2560
Har1873-K600	152.4	38.1	2.41	2560
Har1873-K750	190.5	38.1	2.56	2560
Har1873-K1000	254.0	38.1	2.78	2560
Har1873-K1200	304.8	38.1	3.01	2560

链轮 Sprocket	护栏 Guide	弯轨 Guide Rails	其余配件 Component
S35	R01-R42	G08	C01-C57