

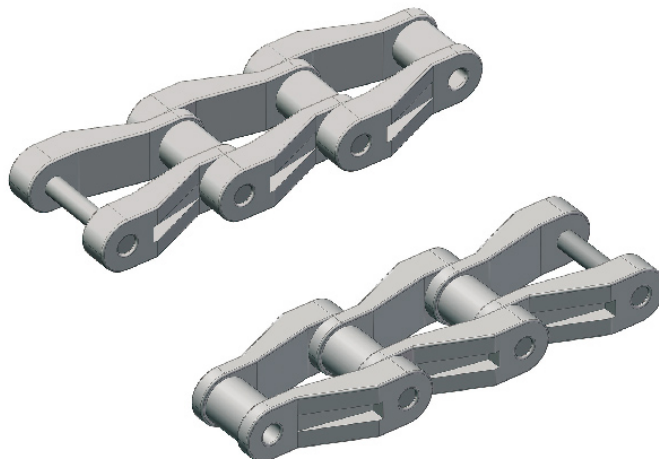
# HarNH78 Series Straight

## TOP CHAINS

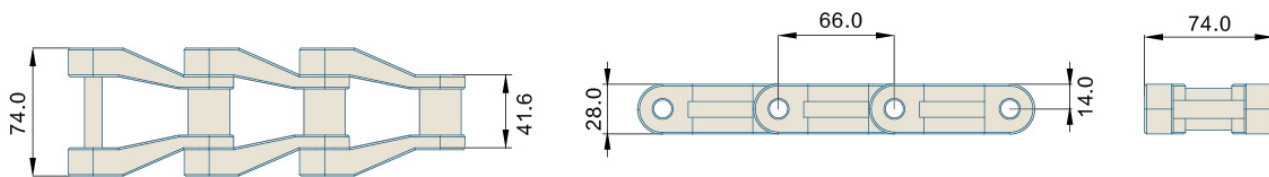
TOP CHAINS NH78

P=66mm, T=28mm

PIN:Stainless steel



节距 Pitch	链板材质 Material	颜色 Color
66mm	POM	咖啡色/Brown 黑色/black



型号 Type No.	宽度 Width (mm)	节距 Pitch (mm)	重量 Weight (Kg/m)	负载 Working Capacity (N)
Har NH78	74	66	2.76	3970

链轮 Sprocket	护栏 Guide	弯轨 Guide Rails	其余配件 Component
—	R01-R42	—	C01-C57