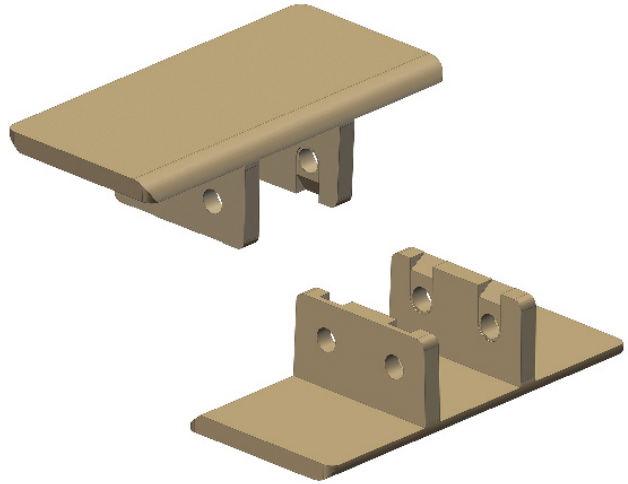


# Har963 Series Straight

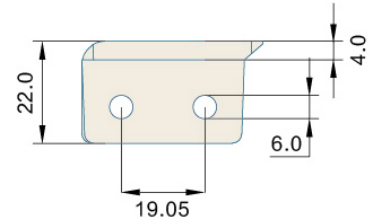
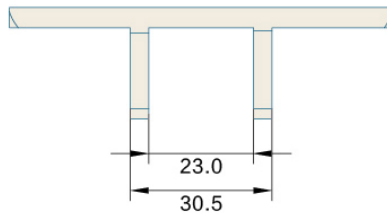
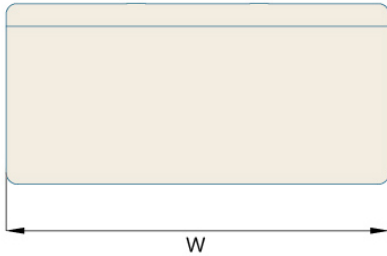
## TOP CHAINS

TOP CHAINS 963

P=38.1mm, T=22mm



节距 Pitch	链板材质 Material	颜色 Color
38.1mm	POM	咖啡色/Brown



型号 Type No.	宽度 Width (mm)	节距 Pitch (mm)	重量 Weight (Kg/m)	负载 Working Capacity (N)
Har963-K325	82.6	38.1	2.10	4400
Har963-K450	114.3	38.1	2.30	4400
Har963-K1000	254.0	38.1	3.17	4400

链轮 Sprocket	护栏 Guide	弯轨 Guide Rails	其余配件 Component
S35	R01-R42	G08	C01-C57