

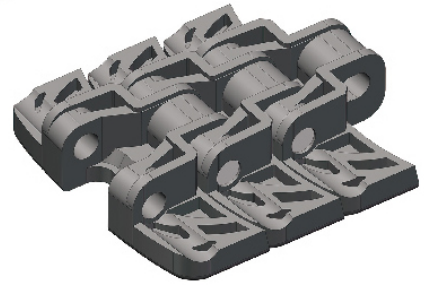
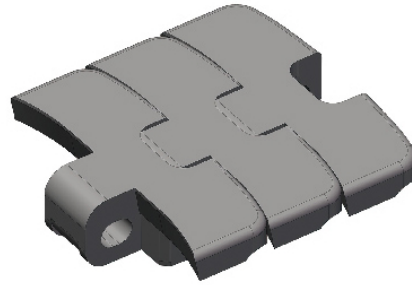
Har1060 Series Curve

TOP CHAINS

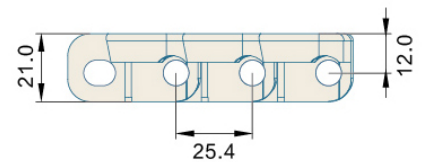
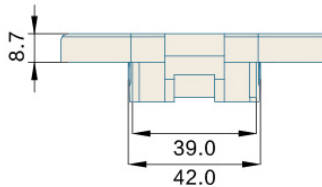
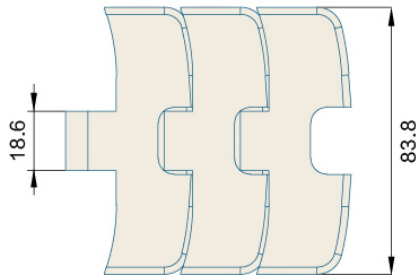
TOP CHAINS 1060 Series

P=25.4mm, T=8.7mm

PIN:Stainless steel



节距 Pitch	链板材质 Material	颜色 Color
25.4mm	POM	深灰色/Dark Gray



型号 Type No.	宽度 Width (mm)	节距 Pitch (mm)	重量 Weight (Kg/m)	转弯半径 Radius (mm)	负载 Working Capacity (N)
Har1050-K330	83.8	25.4	1.68	600	3800

链轮 Sprocket	护栏 Guide	弯轨 Guide Rails	其余配件 Component
S26-S27	R01-R42	G07	C01-C57