

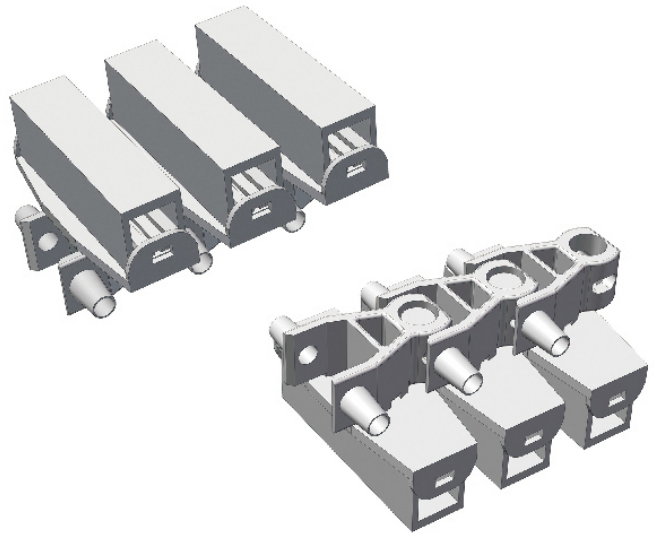
Har2350PW-VT Series

FLEXIBLE CHAINS

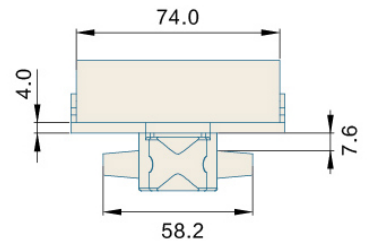
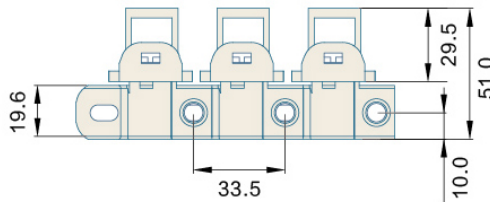
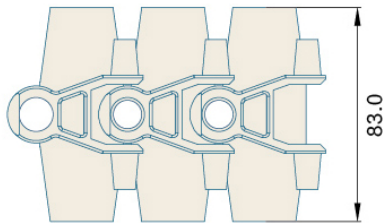
FLEXIBLE CHAINS 2350PW-VT

P=33.5mm, T=51mm

PIN:Stainless steel



节距 Pitch	链板材质 Material	颜色 Color
33.5mm	POM	白色/White



型号 Type No.	宽度 Width (mm)	节距 Pitch (mm)	重量 Weight (Kg/m)	转弯半径 Radius (mm)	负载 Working Capacity (N)
Har2350PW-VT-k327	83.0	33.5	2.52	160	2100

链轮 Sprocket	护栏 Guide	弯轨 Guide Rails	其余配件 Component
S41-S43	R01-R42	—	C01-C57